



Elizabeth Quay water park design mistakes were made, government agency admits

By Graeme Powell

Updated Wed 26 Oct 2016, 1:42pm

Mistakes were made in the design of the Elizabeth Quay water park in Perth, the WA Government agency responsible for the project has admitted.

The water park was opened in February, but was later shut twice after a type of amoeba was discovered in waste pipes and a potentially harmful variety of bacterium was found in the park's water spray during routine sampling.

The park is yet to be reopened.

Metropolitan Redevelopment Authority chief Kieran Kinsella has told a parliamentary hearing into the project that his agency did not "understand all the science" of the water park.

He conceded the filtration system was inadequate, but said another \$290,000 had been spent to rectify the problem and the park should reopen soon.

Labor MP Sue Ellery said it was clear the project was rushed.

"What they have acknowledged is that they botched the design," she said.

"The filtration system that they used did not match the size of the deck that kids were running around in in the water park, so they got the design wrong and they couldn't guarantee safe water in that filtration system.

"The Government should be embarrassed that it has wasted so much taxpayers' money when they should have done the job properly in the first place and not be working to an artificial opening date to satisfy the Premier's political needs."

Mr Kinsella said the upgrading of the filtration system included doubling the number of filters, adding a new pump and adding two ultraviolet filters.

He said that meant the water would spend more time being filtered, cleaned and chlorinated between being pumped to the surface.

Topics: government-and-politics, perth-6000

First posted Wed 26 Oct 2016, 6:55am

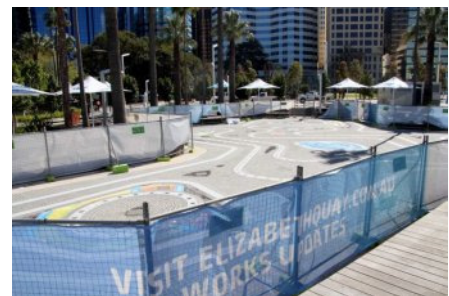


PHOTO: The Elizabeth Quay water playground has been fenced off since it was opened due to health concerns. (ABC News: Eliza Laschon)

RELATED STORY: Perth water park opening backed despite contamination fears

RELATED STORY: Serious plumbing issues revealed at Elizabeth Quay

RELATED STORY: Department knew of bacteria week before water playground shutdown: report

RELATED STORY: WA Government denies pressure over water park opening

MAP: Perth 6000

